



## UTV DOOR KIT



**KIT NUMBER 8080370**

### **2008-09 Kawasaki Teryx Door Kit Installation Manual**

Thank you for purchasing our 08-09 Kawasaki Teryx Door Kit. Please carefully read this instruction sheet entirely before you begin to install the sport cage.

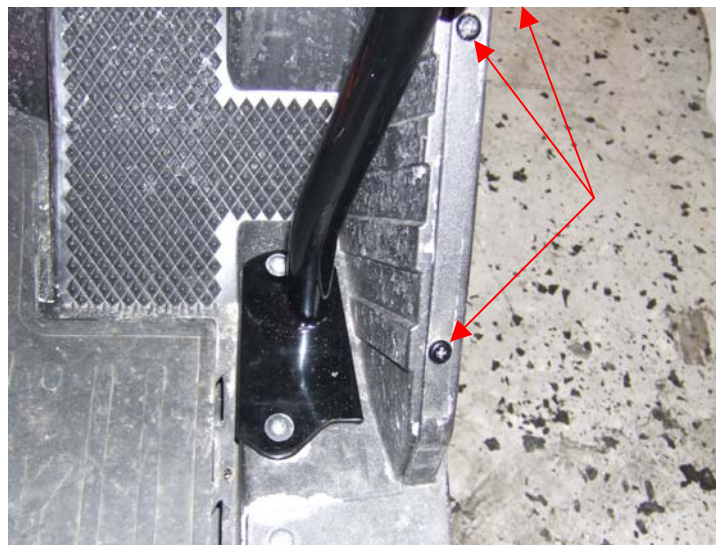
**Wicked Bilt Doors are intended to be used only in accordance with the original manufacturer's safety guidelines and instructions for your specific vehicle. Wicked Bilt Doors are intended for use with your vehicle under normal operating conditions as specified by the original manufacturer in your operating manual. Wicked Bilt Doors are not made or intended for use at high speeds, in extreme environmental conditions, or competitions or competitive activities. Unisteer Performance Products and Wicked Bilt do not accept liability for injury, death, malfunctions, or defects that result from failure to adhere to the original manufacturer's safety guidelines and instructions and operating manual or failure to adhere to Unisteer Performance Products and Wicked Bilt installation instructions, warnings, and guidelines for the use of the Wicked Bilt Door Kit.**

**Wicked Bilt Doors are not intended to protect you or your vehicle during a roll over or during any accident. They are only intended to keep mud from hitting you and to help keep you clean.**

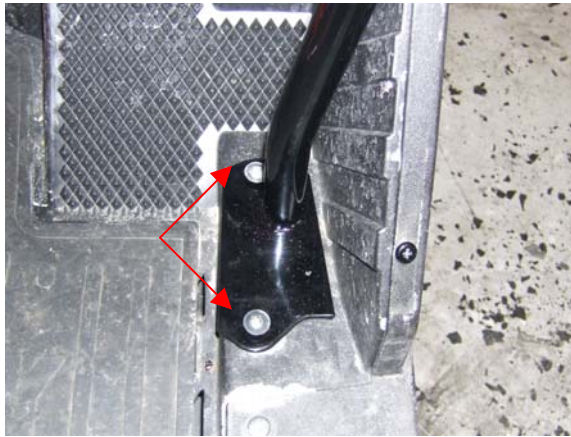
**DO NOT ALTER, CHANGE, OR MODIFY.**

### **Kawasaki Terex Door Installation**

1. Remove the stock steel net on the top of the plastic kick panel by removing the 3 phillips screws.



2. Remove the 2 forward Phillips screws in the floor pan next to the kick panel.



3. Remove the front cage mount bolts. Install the provided shim over the cage mount and install the front door frame mount in place and replace the stock bolts back into the cage holes. Do not tighten yet. Start the lower Phillips screws into the lower plate without the washer on them.



4. Remove the rear main mounting bolts from the cage and install the provided strikers. Replace the stock bolts back into the holes and leave loose.



5. Hang the door on the hinges using the brass washers provided in between the hinge connecting points.



6. Verify door alignment and fit. Torque main mount bolts to 65 ft. lbs. Tighten the lower floor plate screws until snug.



7. You may need to adjust your latch in or out on the door. This can be done by loosening the jam nut and moving the pin in or out.



8. Repeat the process for both doors.

We welcome your suggestions & comments to make this or any of our installations better! If you have any questions or problems regarding this product please contact us at:

**1555 Enterprise Parkway  
Twinsburg, OH 44087  
800-338-9080**

**[WWW.WICKEDBILT.COM](http://WWW.WICKEDBILT.COM)**

(01/07/11)

Copyright © 2011 by Unisteer® Performance Products All rights reserved.

No part of these materials can be reproduced or utilized in any form or by any means, electronic or mechanical, including photocopying, recording or by any information storage and retrieval system, without permission in writing from Unisteer Performance Products.